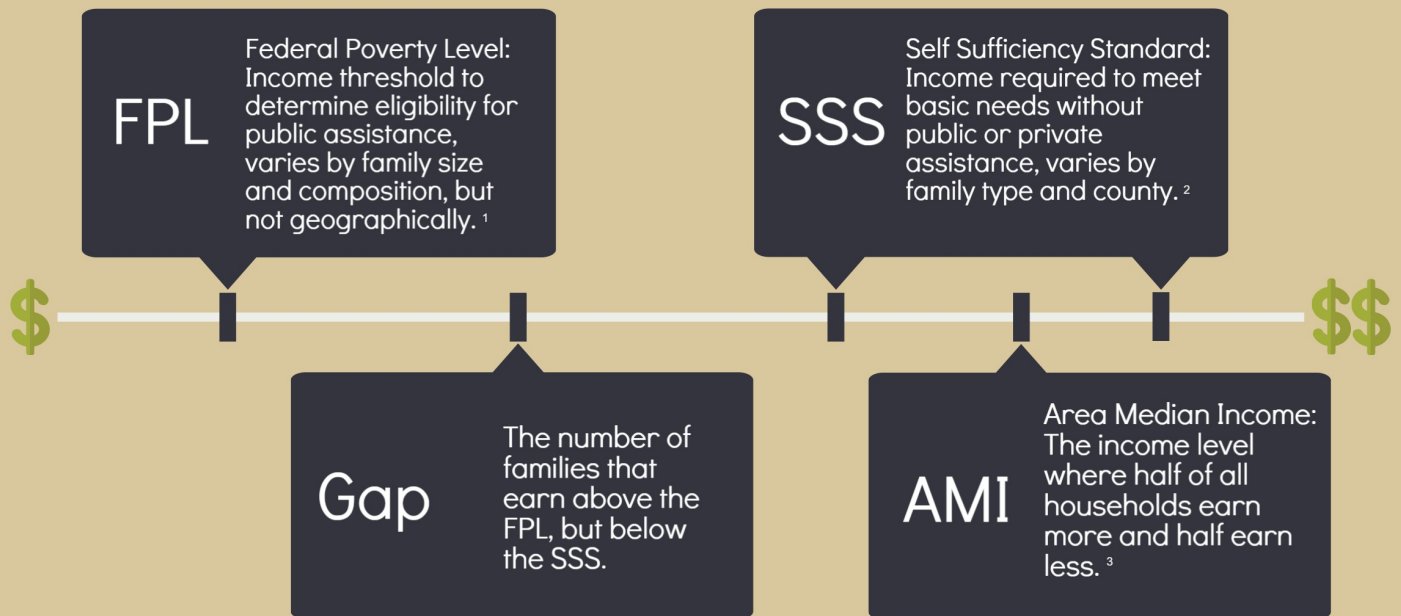


POVERTY

IN METRO DENVER

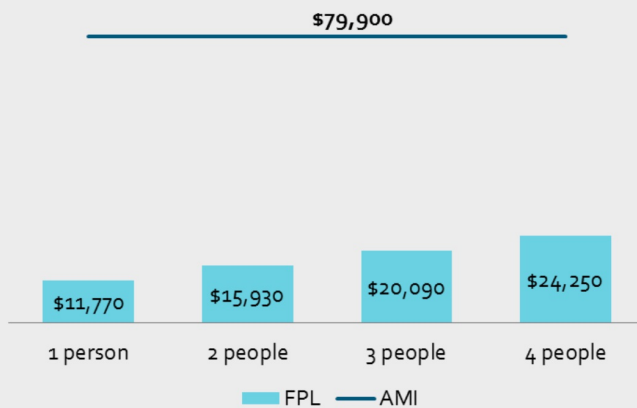
Household Income Continuum



What challenges exist in understanding the true economic health of the region's families?

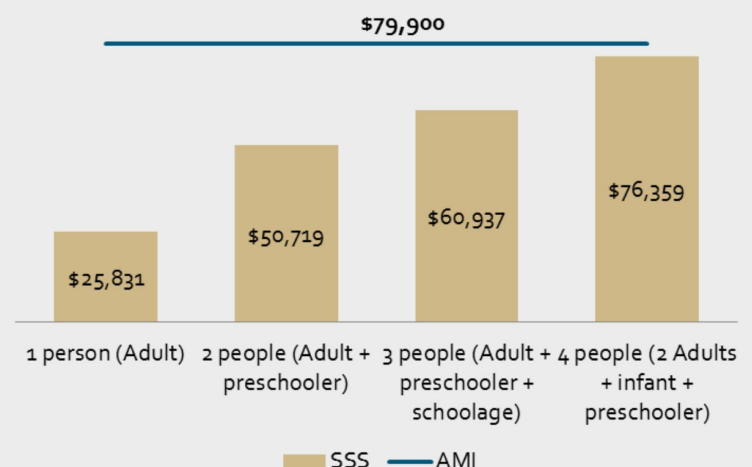
How does each income metric contribute to the picture of true economic health in the region?

Federal Poverty Levels 2015



Metro Denver's AMI is over **THREE** times the FPL for a family of four.

Self Sufficiency Standard (Adams County*)



The SSS for a family of two adults, an infant, and a preschooler in Adams County is **314%** of the FPL.

*Adams County has the third highest share of poverty in the region. ⁴ See the SSS to see what it takes to meet basic needs in other counties.

354,000 People Live in Poverty⁴

The equivalent of Arvada, Thornton & Westminster together.



Under 5 5 to 17 18 to 64 Over 65

Over 30% of people living in poverty are children under the age of 18.

Poverty Support Programs



SNAP: Supplemental Nutrition Assistance Program⁵
WIC: Women, Infants and Children⁶



CCCAP: Colorado Child Care Assistance Program⁷



Medicaid⁸
CHP+: Child Health Plan Plus⁹

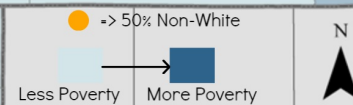
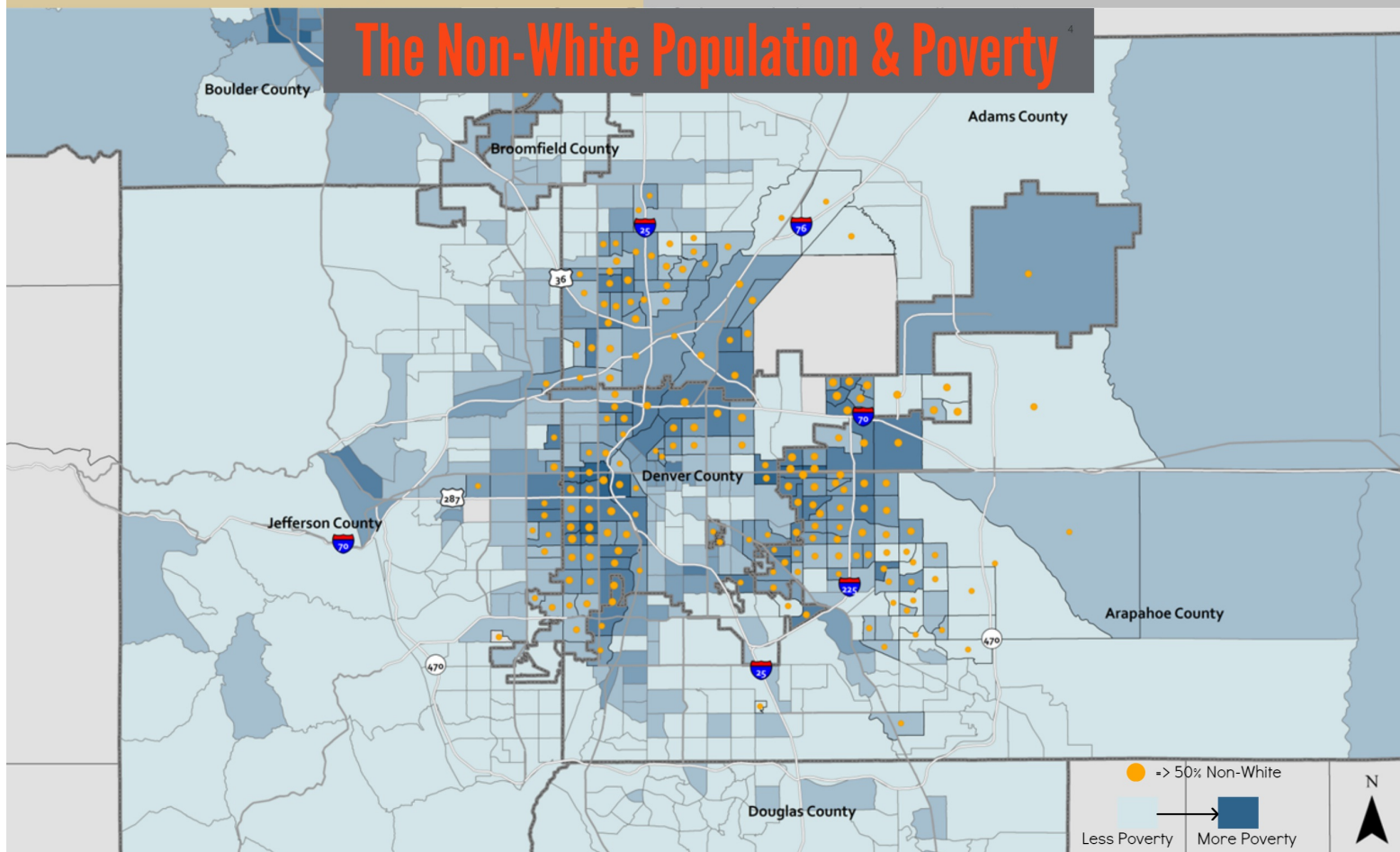


Section 8: Tenant vouchers¹⁰



EITC: Earned Income Tax Credit¹¹
TANF: Temporary Assistance for Needy Families¹²

The Non-White Population & Poverty⁴



Sources:

- [1. https://aspe.hhs.gov/poverty-guidelines](https://aspe.hhs.gov/poverty-guidelines)
- [2. http://cdponline.org/wp-content/uploads/2015/06/SSS-FINAL.pdf](http://cdponline.org/wp-content/uploads/2015/06/SSS-FINAL.pdf)
- [3. https://www.census.gov/quickfacts/meta/long_INC110214.htm](https://www.census.gov/quickfacts/meta/long_INC110214.htm)
- US Census Bureau American Community Survey 5-year tract estimates 2014, <http://factfinder.census.gov/faces/nav/jsf/pages/index.xhtml>
- [5. http://www.fns.usda.gov/snap/supplemental-nutrition-assistance-program-snap](http://www.fns.usda.gov/snap/supplemental-nutrition-assistance-program-snap)
- [6. http://www.fns.usda.gov/wic/women-infants-and-children-wic](http://www.fns.usda.gov/wic/women-infants-and-children-wic)
- [7. http://www.coloradoofficeofearlychildhood.com/cccap-parents](http://www.coloradoofficeofearlychildhood.com/cccap-parents)
- [8. https://www.medicaid.gov/medicaid/index.html](https://www.medicaid.gov/medicaid/index.html)
- [9. https://www.colorado.gov/pacific/hcpf/child-health-plan-plus](https://www.colorado.gov/pacific/hcpf/child-health-plan-plus)
- [10. http://portal.hud.gov/hudportal/HUD?src=/program_offices/comm_planning/library/glossary/](http://portal.hud.gov/hudportal/HUD?src=/program_offices/comm_planning/library/glossary/)
- [11. http://www.piton.org/eitc](http://www.piton.org/eitc)
- [12. http://www.acf.hhs.gov/ofa/programs/tanf](http://www.acf.hhs.gov/ofa/programs/tanf)

Brought to you by

Shift
RESEARCH LAB

A Program of The Piton Foundation
shiftresearchlab.org