



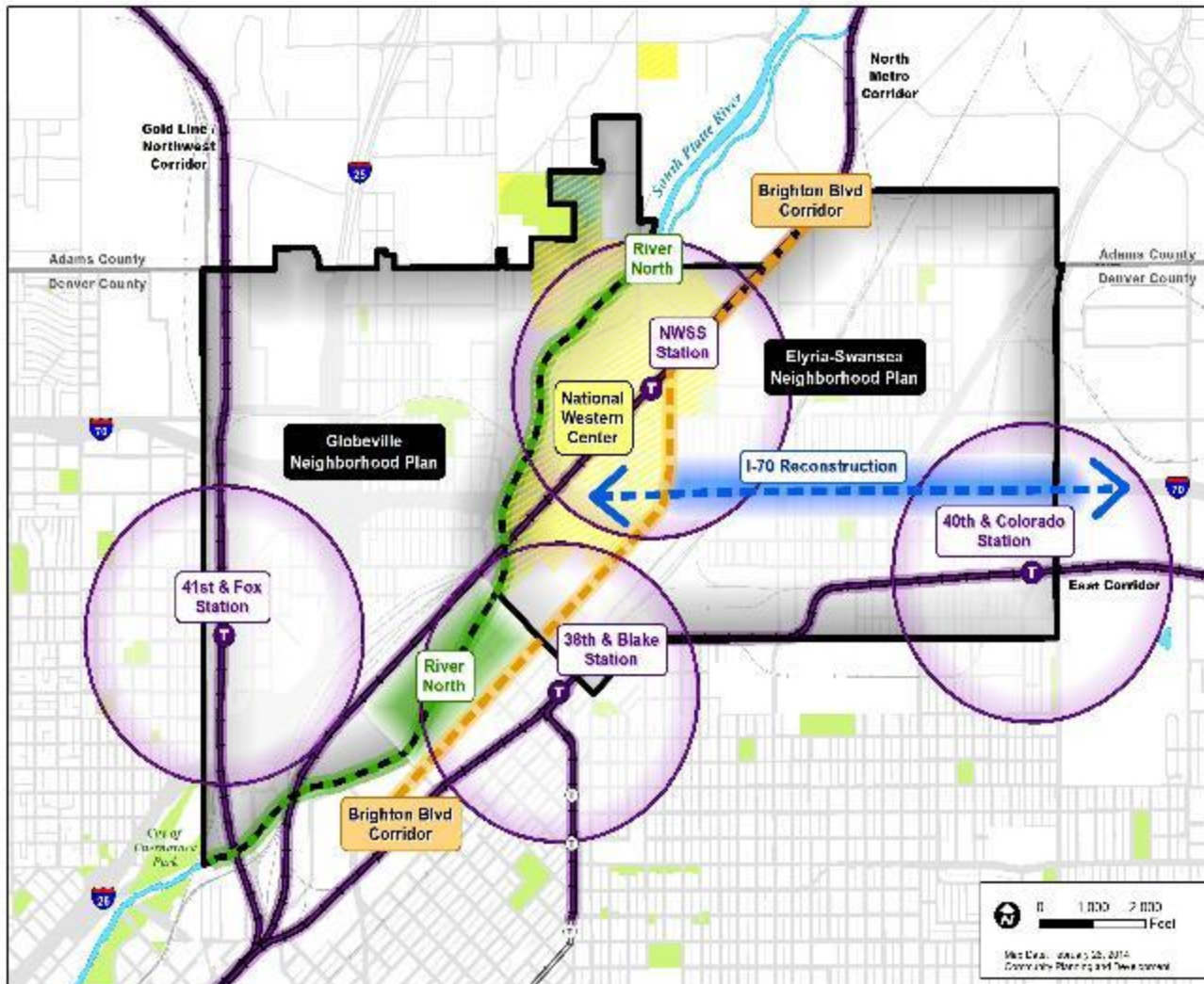
DENVER
THE MILE HIGH CITY

North Denver Cornerstone Collaborative

Six Projects - One Vision



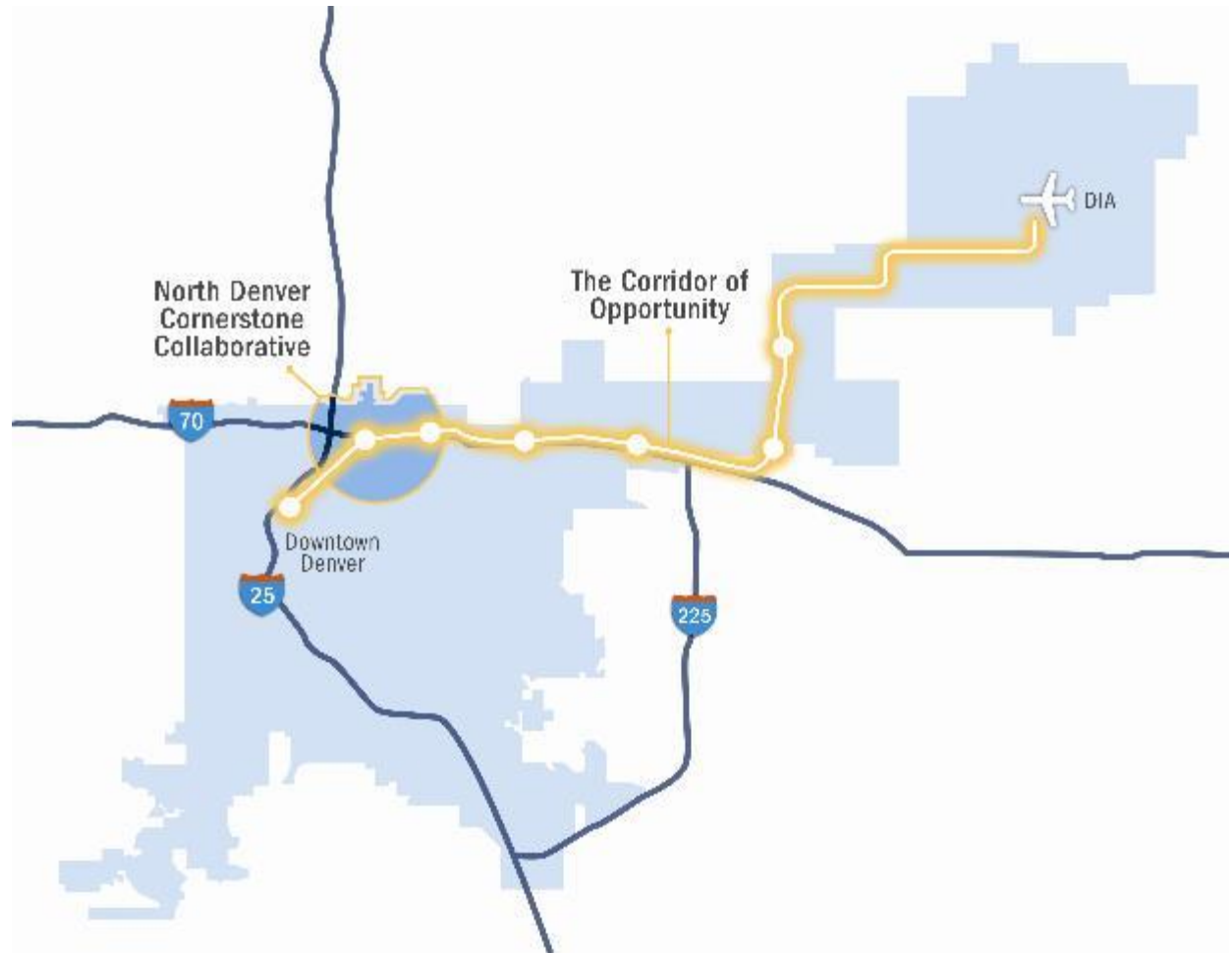
Project Overview & Impact



- 3,000 acres
- Minutes from downtown
- I-25 and I-70, Rail, Platte River

Mayor Hancock's Vision Denver's Corridor of Opportunity

The North Denver Cornerstone Collaborative (NDCC) is part of a larger comprehensive envisioning effort by Mayor Michael B. Hancock to energize a nearly **23-mile corridor** linking Denver Union Station to Denver International Airport along I-70 & RTD's east line



Lack of Connectivity



Lack of Connectivity



47th and York: Active Rail at School Crossing





Globeville & Elyria-Swansea Neighborhood Plans



National Western Center



Brighton Blvd. Corridor Redevelopment



River North (RiNo)



I-70 East



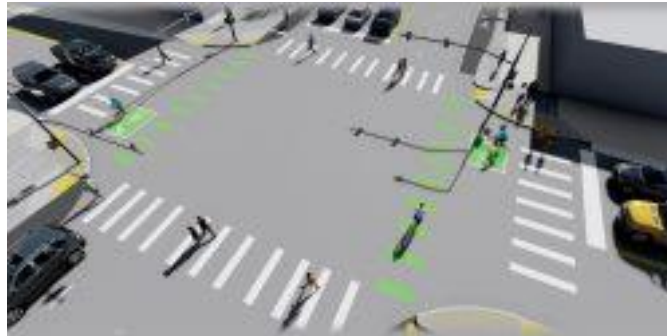
RTD Station Development



Brighton Boulevard: A New Gateway into the City



Brighton Boulevard: A New Gateway into the City



River North: A River Corridor & Arts District





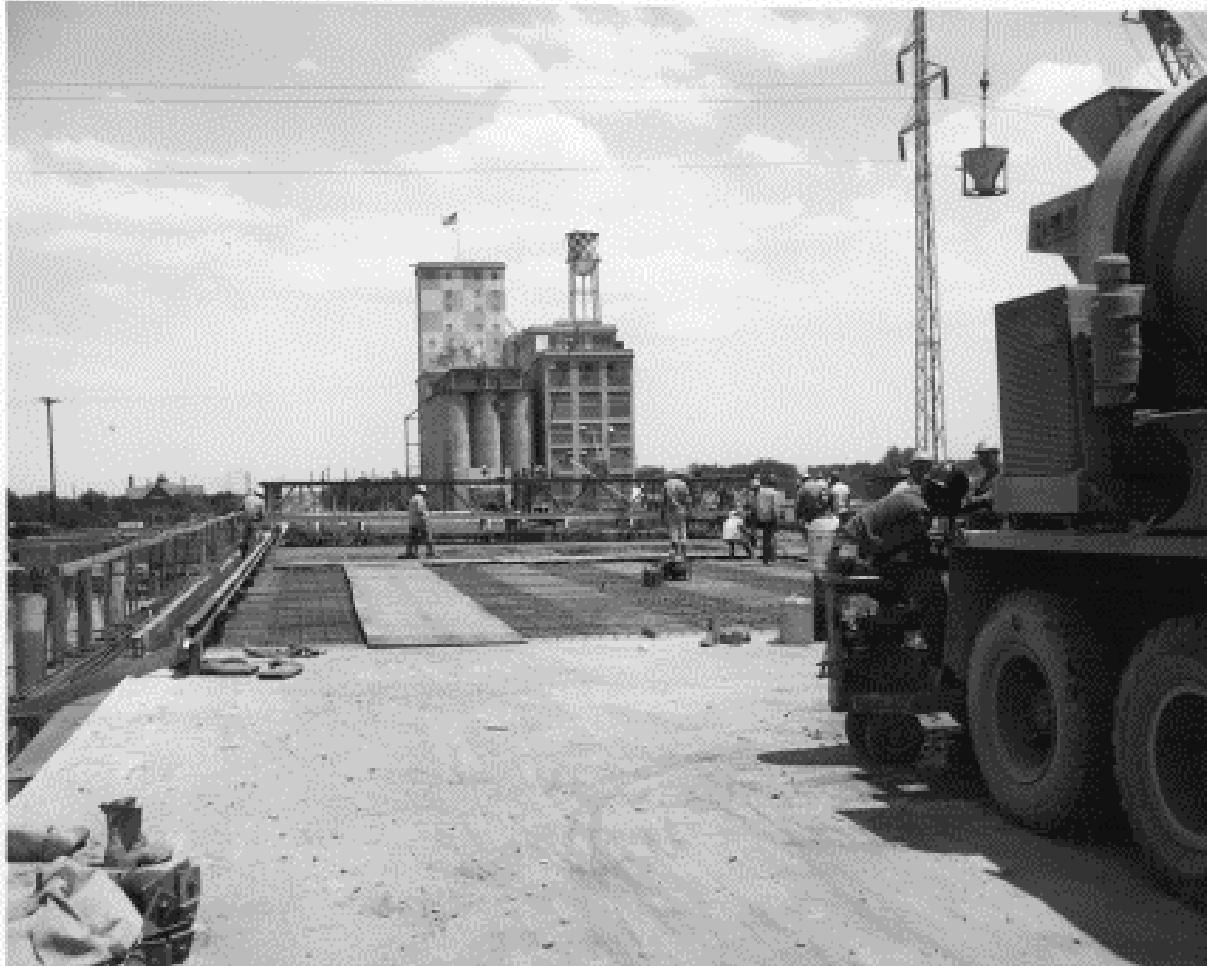


I-70 Construction in 1960's



I-70 Construction in 1960's





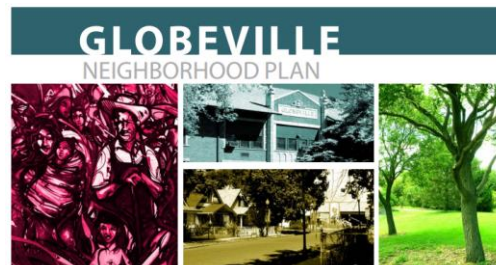


Partnerships!





2015
ELYRIA & SWANSEA
NEIGHBORHOODS PLAN



Globeville/Elyria Swansea: Hidden Gems



Globeville/Elyria Swansea: Rich History of Immigrants

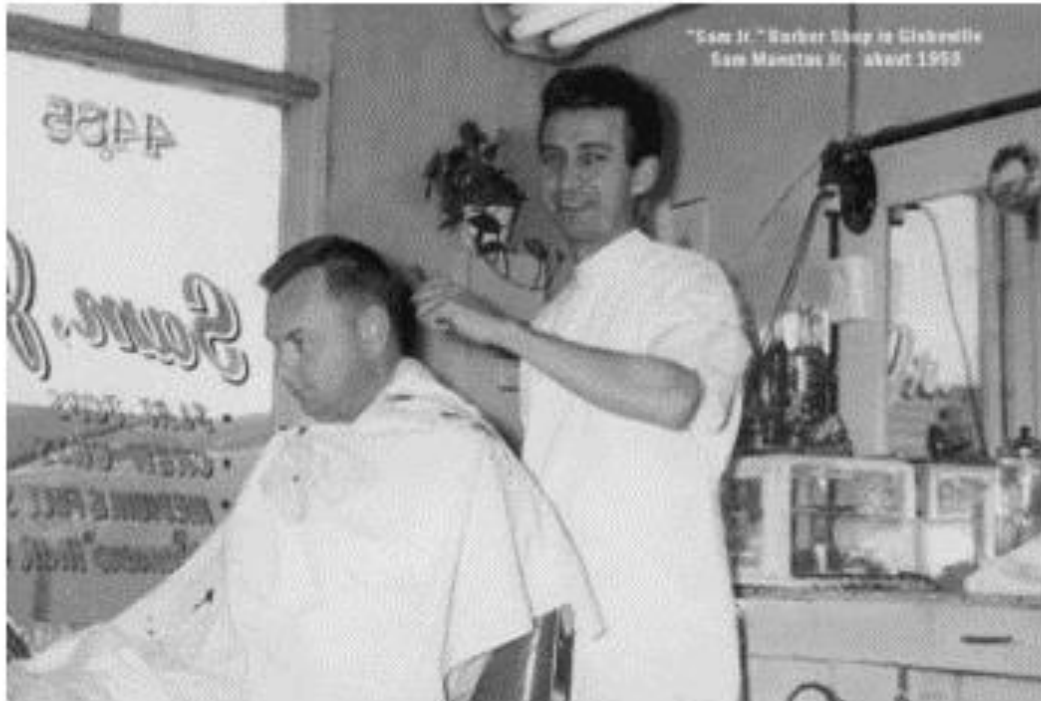


Globeville/Elyria Swansea: Rich History of Immigrants





Globeville/Elyria Swansea: Hidden Gems



Globeville/Elyria Swansea: Manufacturing Legacy



Globeville/Elyria Swansea: Asarco smelter workers , ca. 1900





DENVER
THE MILE HIGH CITY



Globeville/Elyria Swansea: Hidden Gems







DENVER
THE MILE HIGH CITY





DENVER
THE MILE HIGH CITY



Real Estate Escalation and Gentrification



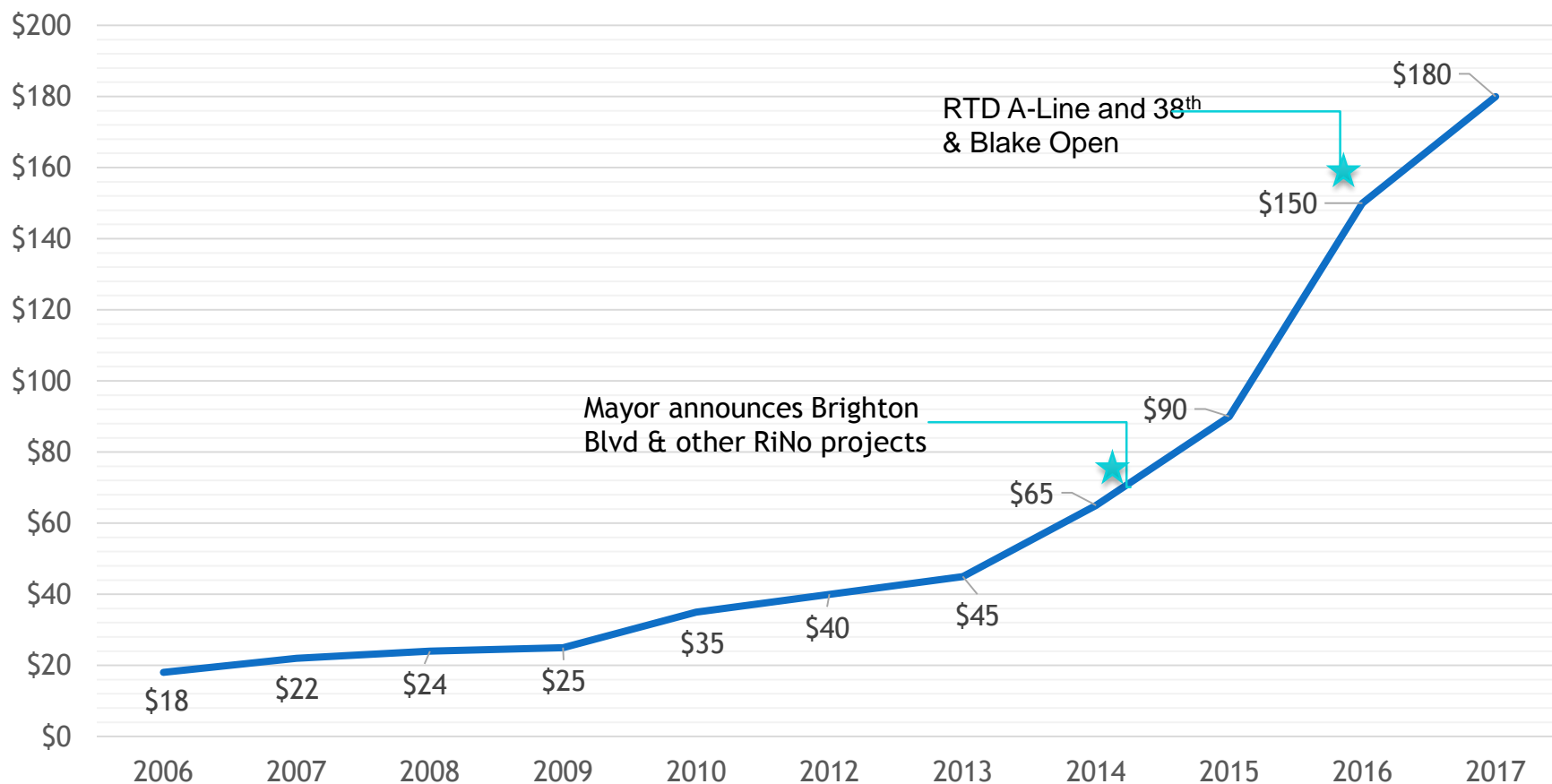
RiNo Real Estate Escalation and Gentrification



RiNo Real Estate Escalation and Gentrification

10-year Increase in Land Values (s.f.)

— Land Value (s.f.)



NDCC's Response



















Central 70: Better Connections



NATIONAL WESTERN CENTER

LOCAL IMPACT • GLOBAL REACH



THANK YOU!

